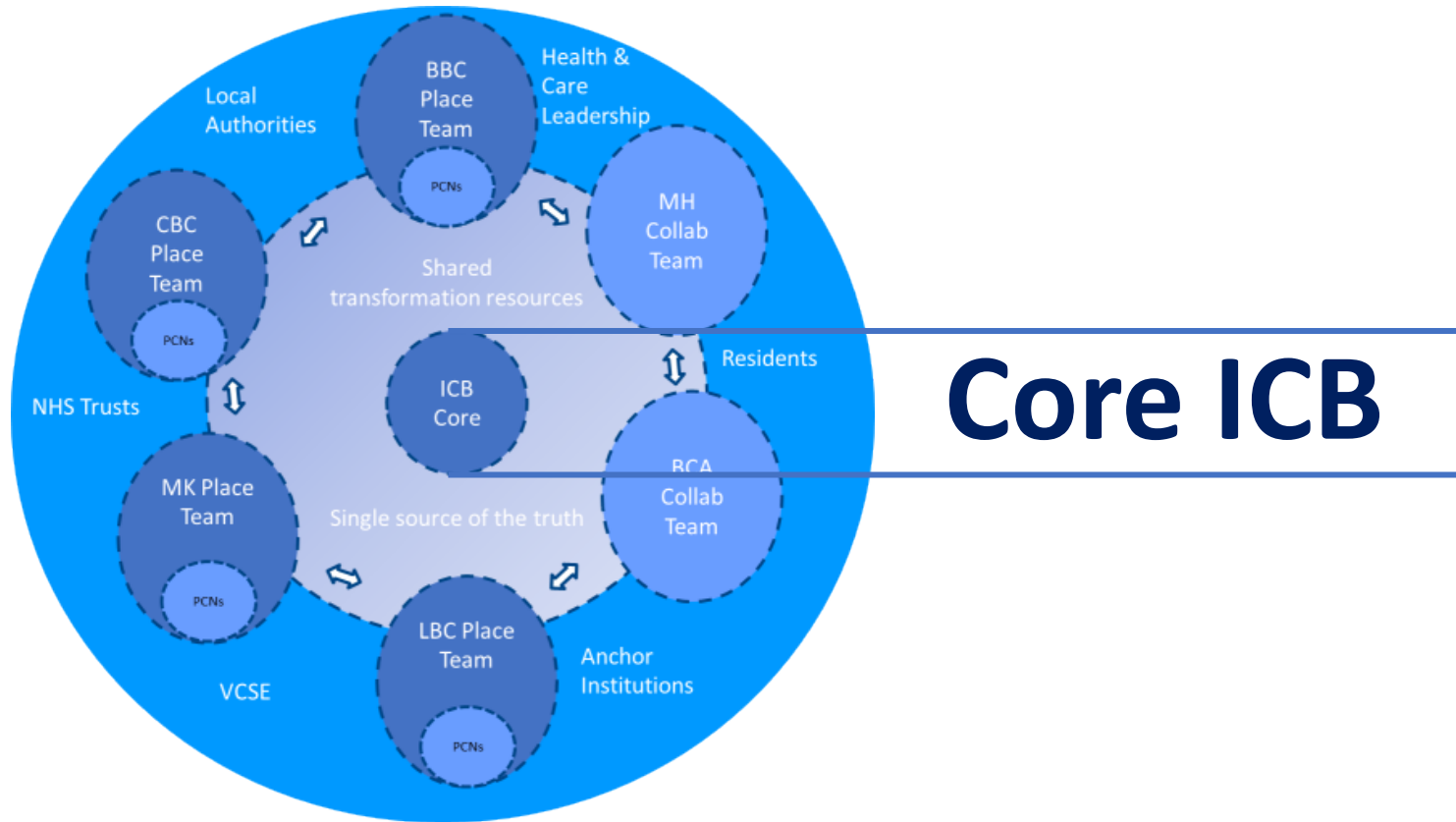




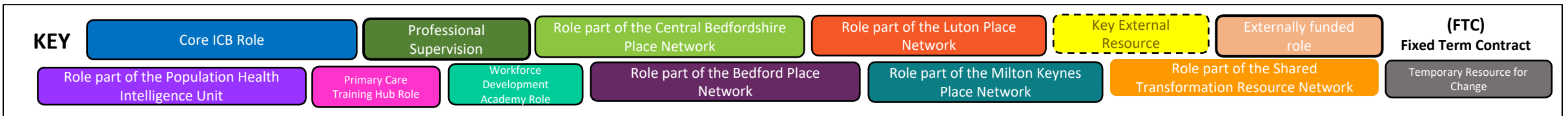
BLMK ICB Final Structures

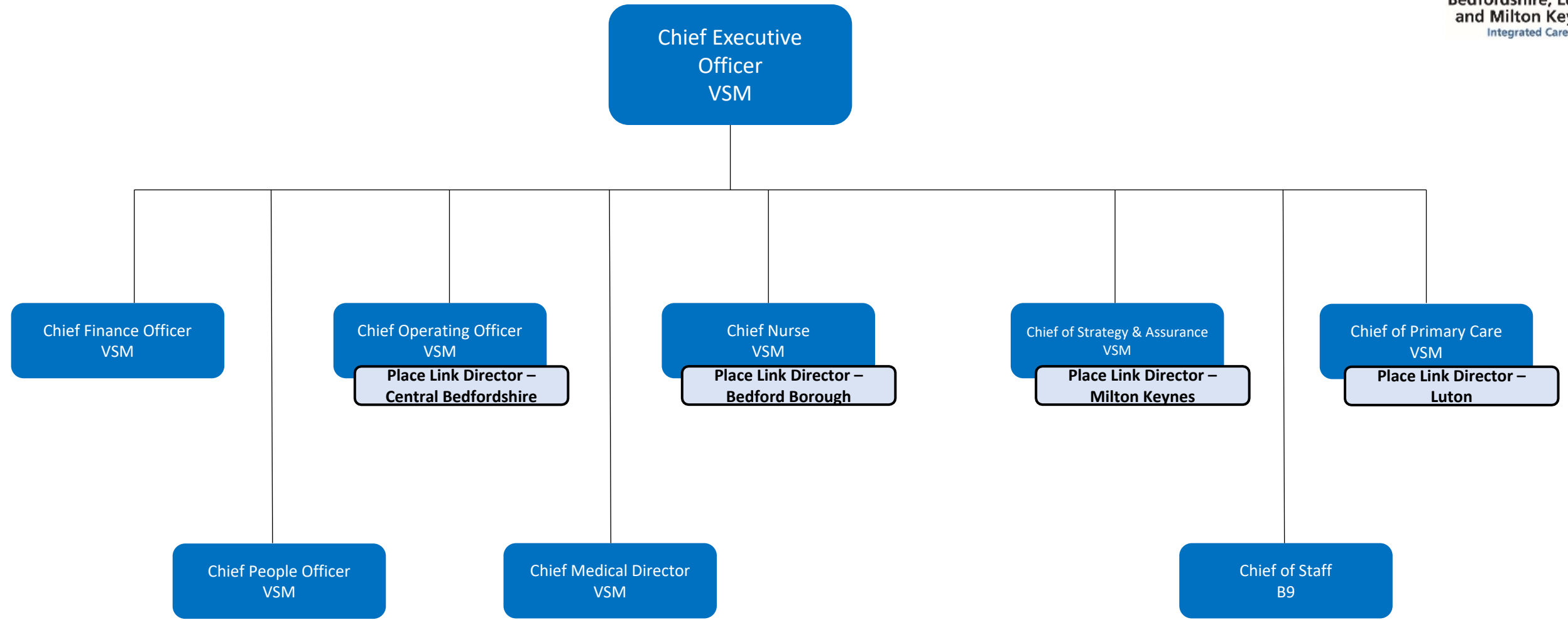
24th August-23

Contents	Page
Core ICB	3
Executive Office	4
Staff Directorate – Emergency Preparedness, Resilience and Response (EPRR), Corporate Office & Enquiries and Experience	5
Medical Directorate – Digital, Information Governance (IG), Cancer, Research & Innovation, Leadership, Business Support and Clinical Strategy	6
People Directorate – People & Development & Organisational Development (OD)	7
People Directorate – Workforce Development Academy (WDA) and Primary Care Training Hub (PCTH)	8
Finance Directorate – Finance & Estates	9
Primary Care Directorate - Leadership, Integrated Primary Care, Integrated Same Day Access and Directory of Services (DoS)	10
Primary Care Directorate - Pharmacy	11
Nursing Directorate – Quality, Inequalities & Improvement	12
Nursing Directorate – Safeguarding & Vulnerabilities	13
Chief Operating Officer Directorate – Senior Structure & Business Intelligence (BI) & Population Health Management (PHM)	14
Chief Operating Officer Directorate – Shared Contracting Function	15
Strategy & Assurance Directorate	16
Shared Transformation Resource Teams and the Wider Shared Transformation Network	17
Shared Transformation Resource – Team and Wider Network	18 -19
Place Delivery Resource Teams and the Wider Place Network	20
Place Delivery Resource - Bedford, Central Bedfordshire, Luton and Milton Keynes (MK) Teams and Wider Place Networks	21-25
Out of Scope of Year 1 Consultation	26
Chief Operating Officer Directorate – Complex Care and Placements Department	27
Chief Operating Officer Directorate – Children, Young People & Maternity	28
Chief Operating Officer Directorate – Mental Health, Learning Disabilities and Autism	29
Chief Operating Officer Directorate – Individual Funding Requests (IFR) Team	30



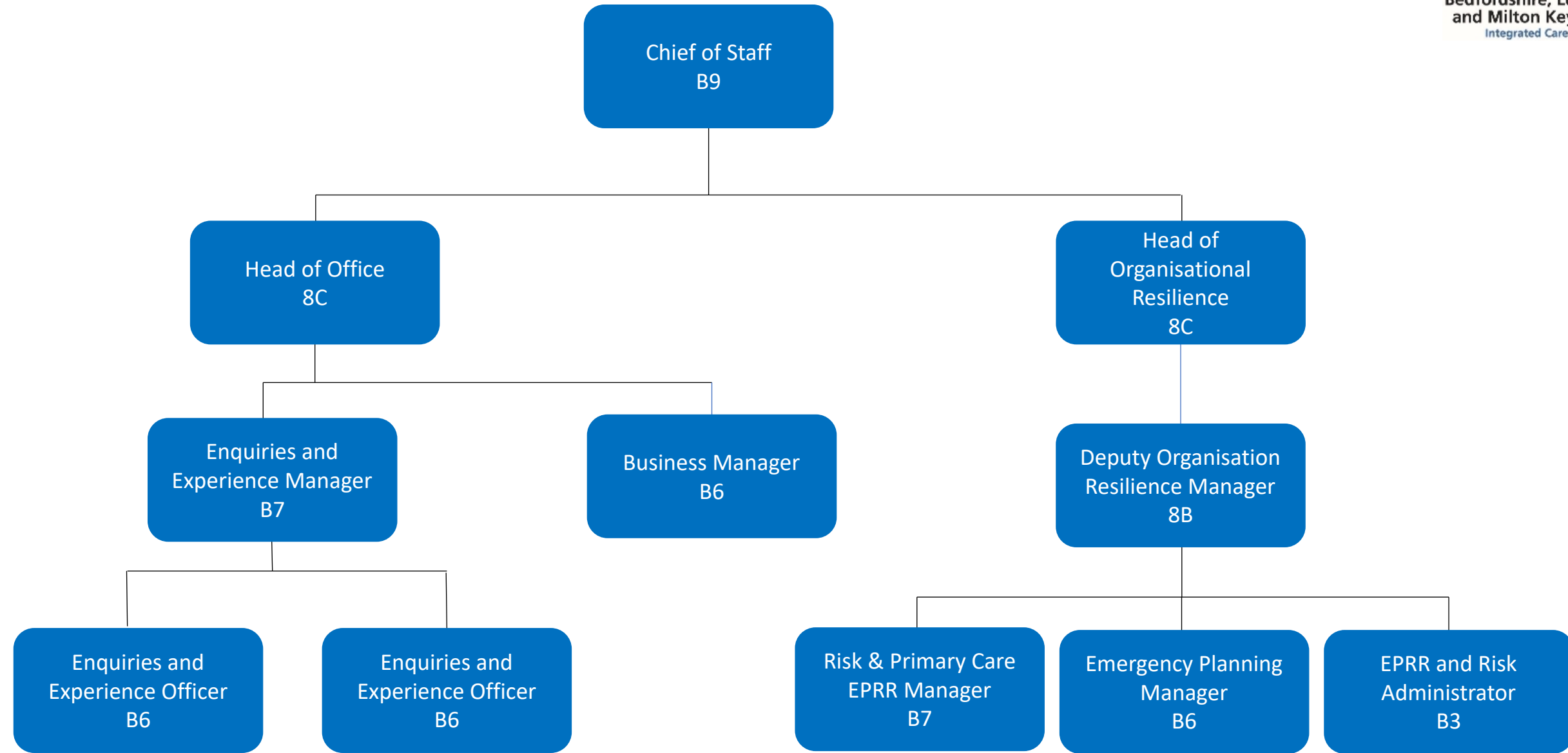
Core ICB





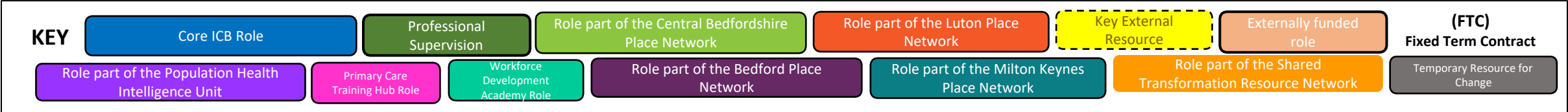
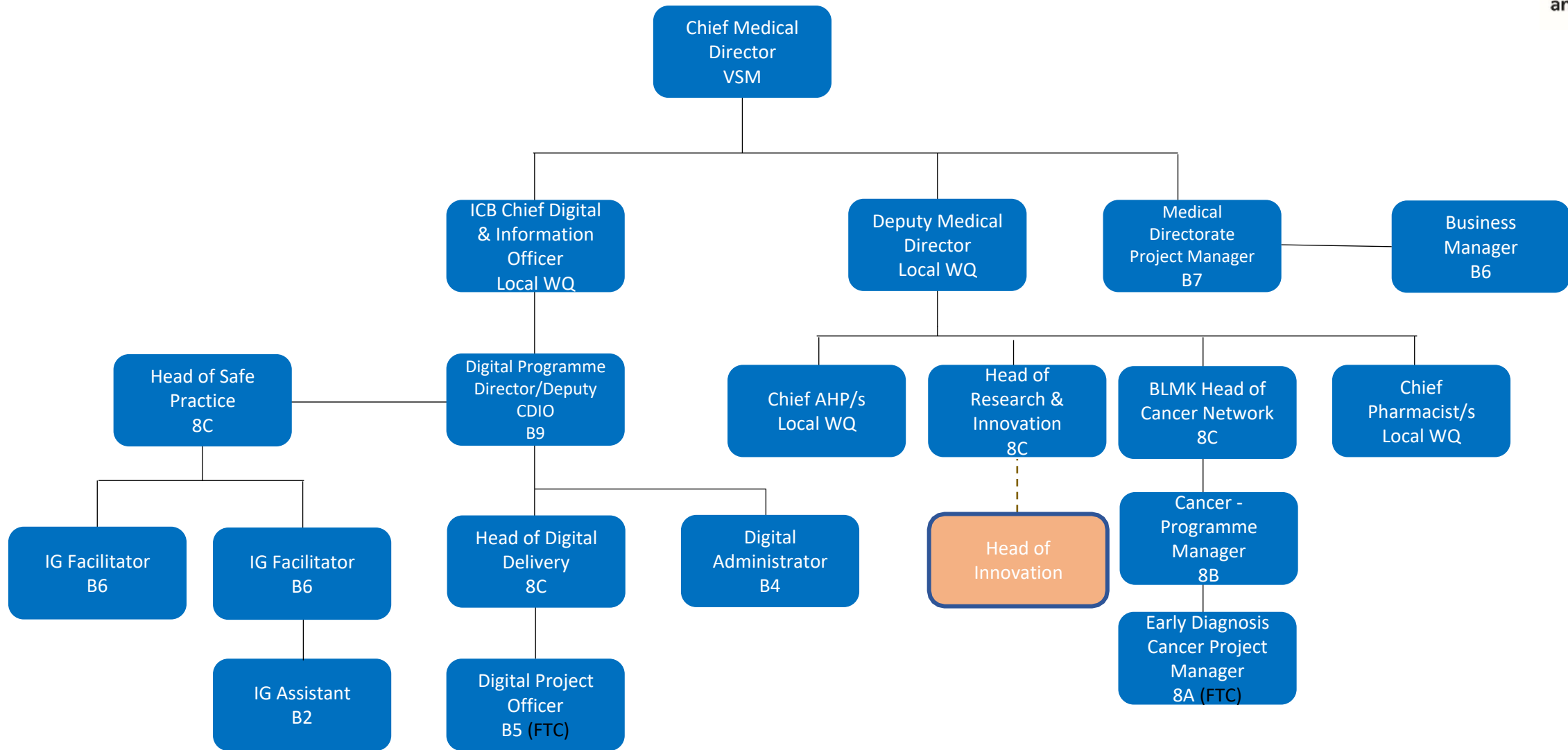
KEY

Core ICB Role	Professional Supervision	Role part of the Central Bedfordshire Place Network	Role part of the Luton Place Network	Key External Resource	Externally funded role	(FTC) Fixed Term Contract
Role part of the Population Health Intelligence Unit	Primary Care Training Hub Role	Workforce Development Academy Role	Role part of the Bedford Place Network	Role part of the Milton Keynes Place Network	Role part of the Shared Transformation Resource Network	Temporary Resource for Change

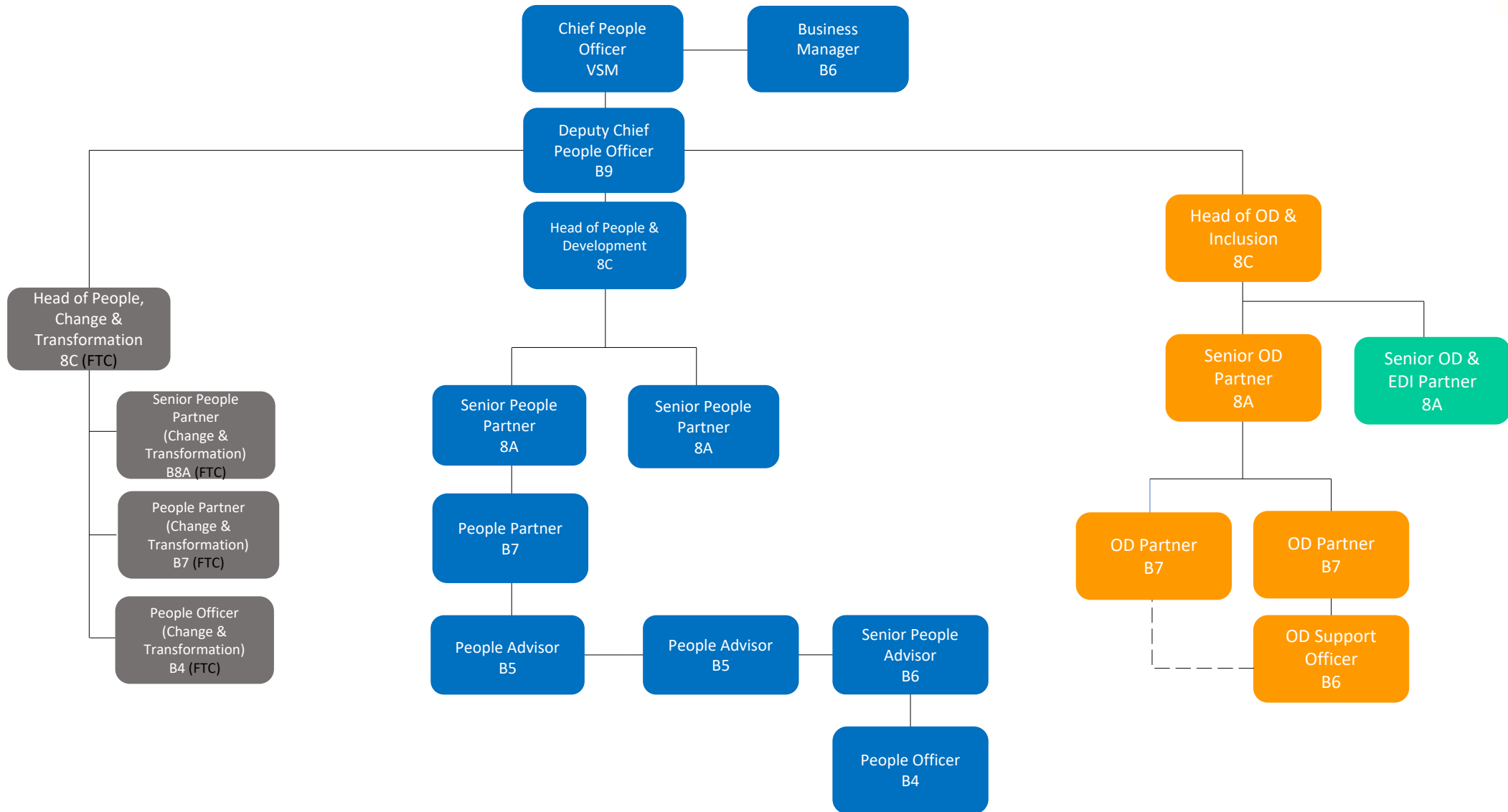


KEY

Core ICB Role	Professional Supervision	Role part of the Central Bedfordshire Place Network	Role part of the Luton Place Network	Key External Resource	Externally funded role	(FTC) Fixed Term Contract
Role part of the Population Health Intelligence Unit	Primary Care Training Hub Role	Workforce Development Academy Role	Role part of the Bedford Place Network	Role part of the Milton Keynes Place Network	Role part of the Shared Transformation Resource Network	Temporary Resource for Change

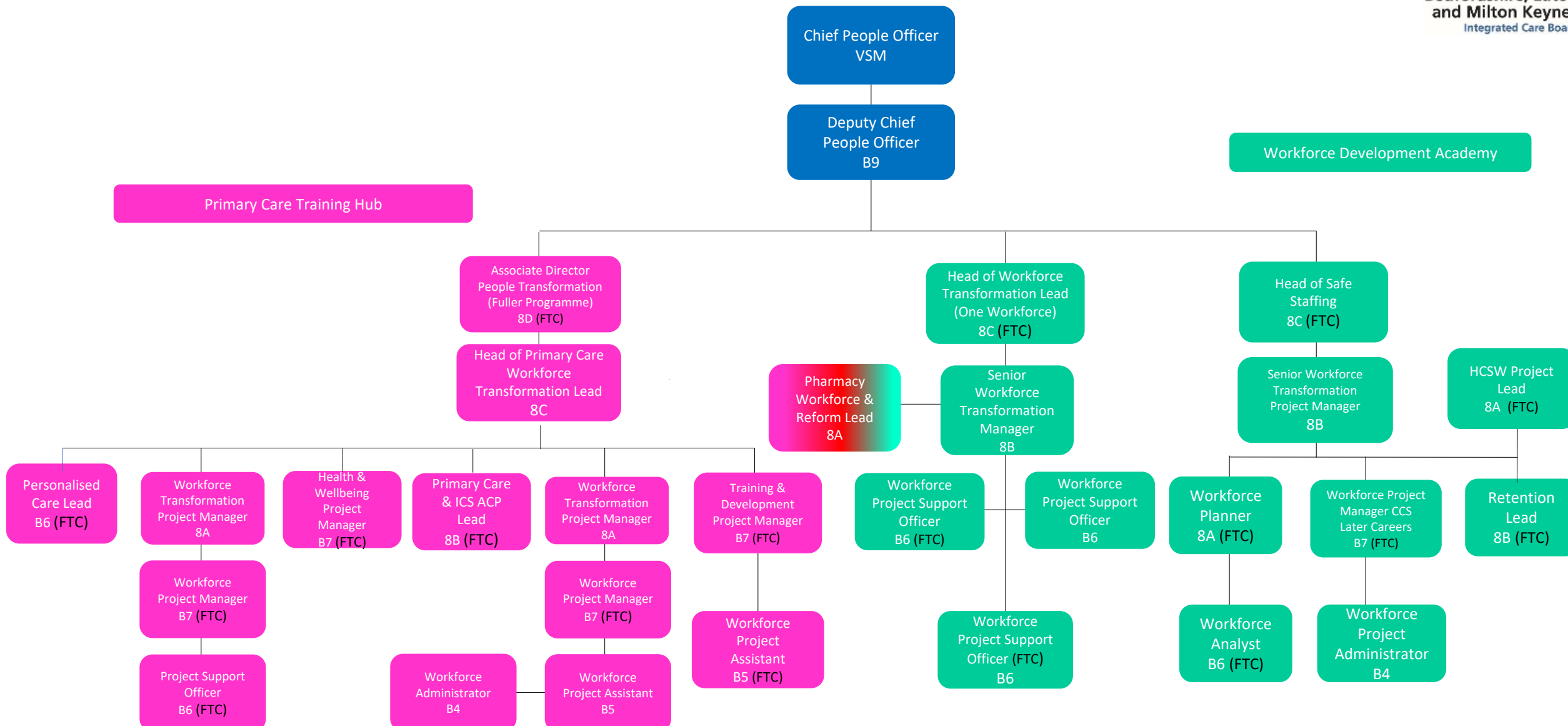


People Directorate – People & Development & Organisational Development (OD)



KEY	Core ICB Role	Professional Supervision	Role part of the Central Bedfordshire Place Network	Role part of the Luton Place Network	Key External Resource	Externally funded role	(FTC) Fixed Term Contract
	Role part of the Population Health Intelligence Unit	Primary Care Training Hub Role	Workforce Development Academy Role	Role part of the Bedford Place Network	Role part of the Milton Keynes Place Network	Role part of the Shared Transformation Resource Network	Temporary Resource for Change

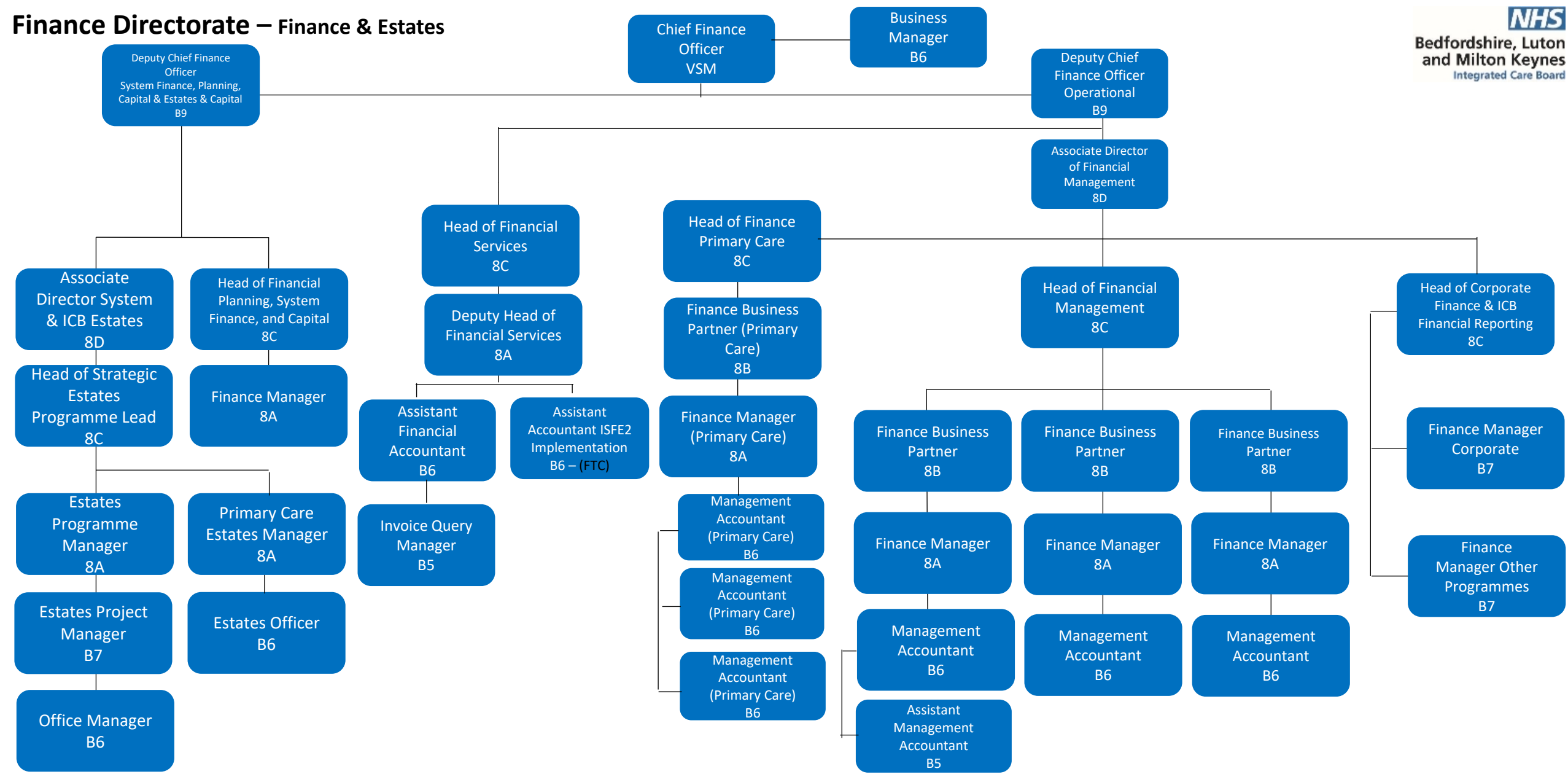
People Directorate – Workforce Development Academy (WDA) and Primary Care Training Hub (PCTH)



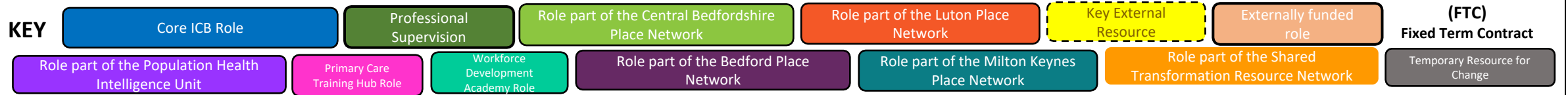
KEY

Core ICB Role	Professional Supervision	Role part of the Central Bedfordshire Place Network	Role part of the Luton Place Network	Key External Resource	Externally funded role	(FTC) Fixed Term Contract
Role part of the Population Health Intelligence Unit	Primary Care Training Hub Role	Workforce Development Academy Role	Role part of the Bedford Place Network	Role part of the Milton Keynes Place Network	Role part of the Shared Transformation Resource Network	Temporary Resource for Change

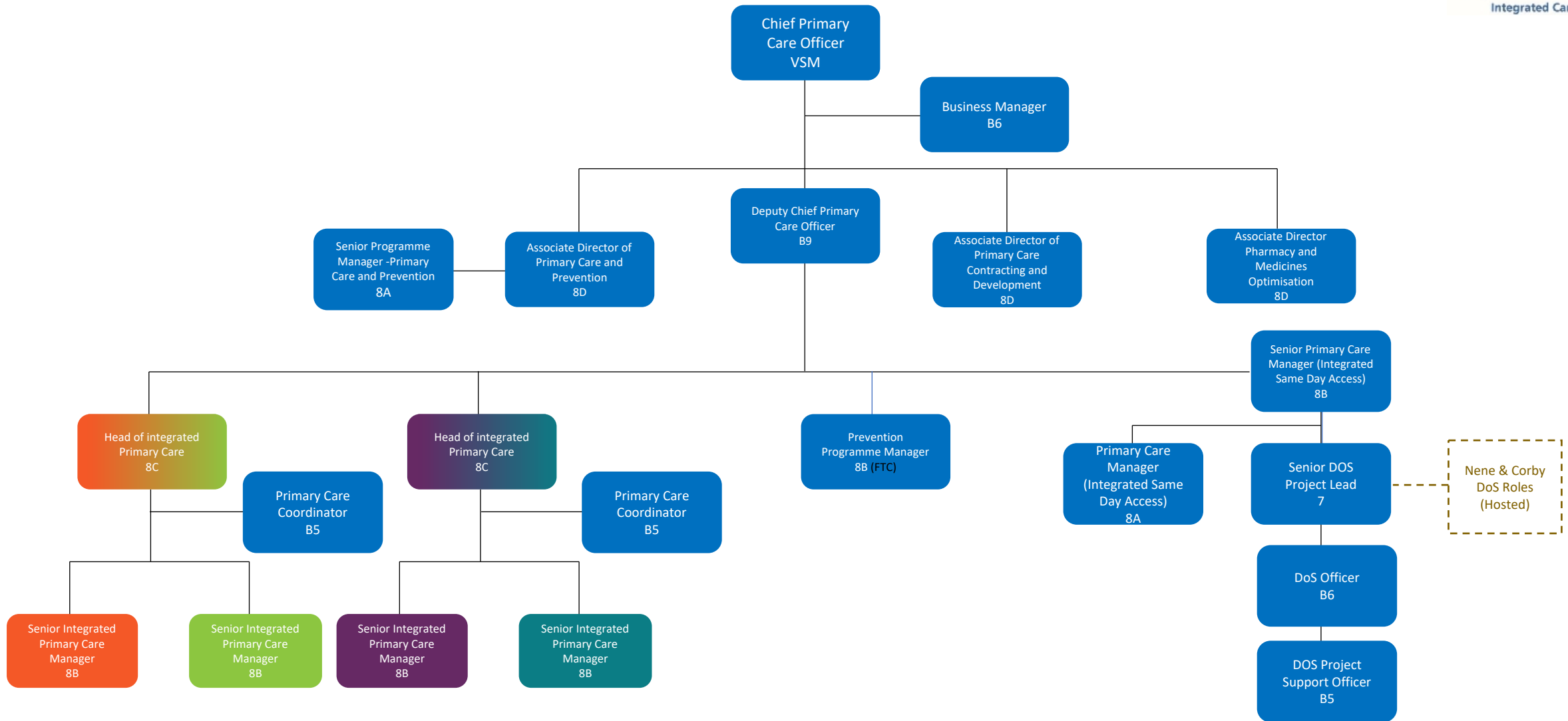
Finance Directorate – Finance & Estates



KEY

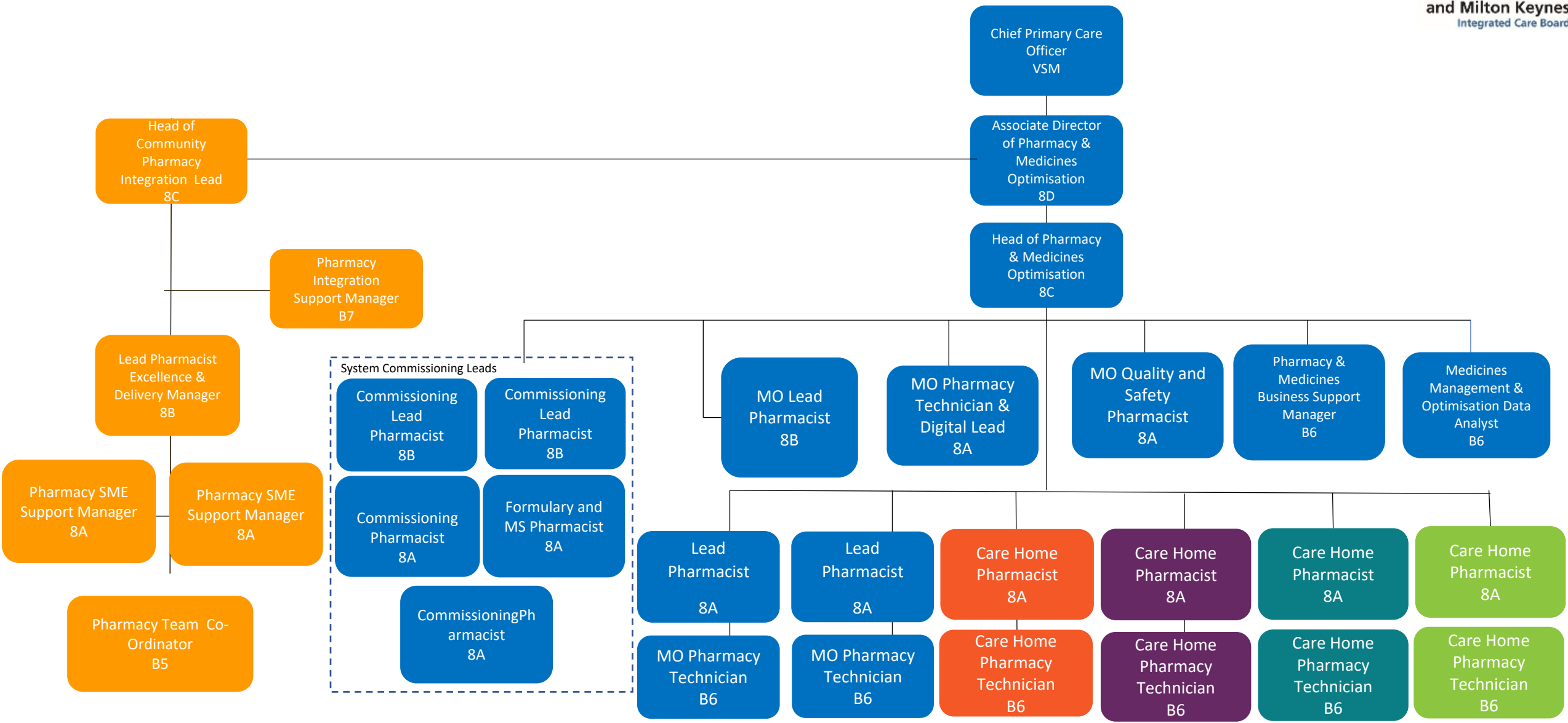


Primary Care Directorate – Leadership, Integrated Primary Care, Integrated Same Day Access and Directory of Services (DoS)



KEY	Core ICB Role	Professional Supervision	Role part of the Central Bedfordshire Place Network	Role part of the Luton Place Network	Key External Resource	Externally funded role	(FTC) Fixed Term Contract
	Role part of the Population Health Intelligence Unit	Primary Care Training Hub Role	Workforce Development Academy Role	Role part of the Bedford Place Network	Role part of the Milton Keynes Place Network	Role part of the Shared Transformation Resource Network	Temporary Resource for Change

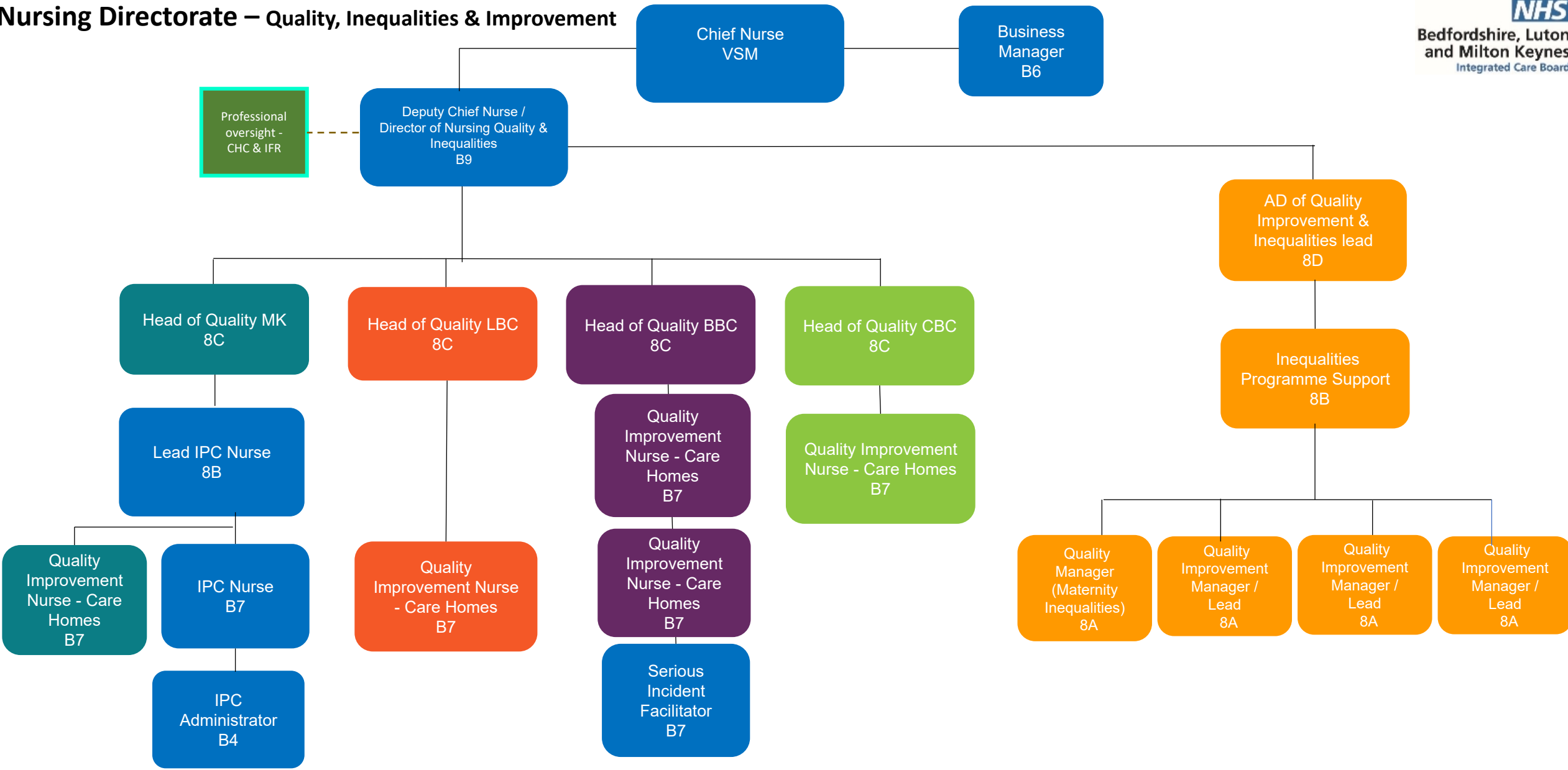
Primary Care Directorate – Pharmacy



KEY

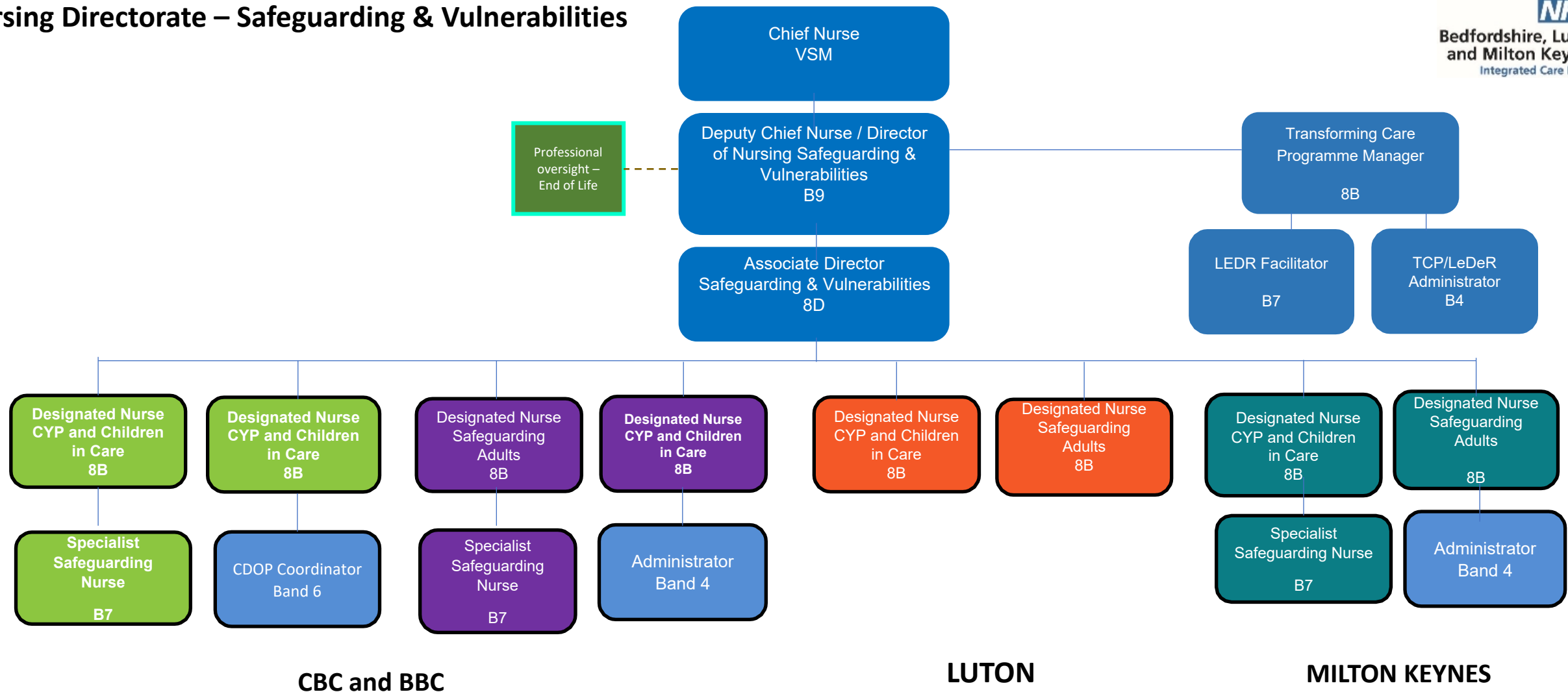
Core ICB Role	Professional Supervision	Role part of the Central Bedfordshire Place Network	Role part of the Luton Place Network	Key External Resource	Externally funded role	(FTC) Fixed Term Contract
Role part of the Population Health Intelligence Unit	Primary Care Training Hub Role	Workforce Development Academy Role	Role part of the Bedford Place Network	Role part of the Milton Keynes Place Network	Role part of the Shared Transformation Resource Network	Temporary Resource for Change

Nursing Directorate – Quality, Inequalities & Improvement



KEY	Core ICB Role	Professional Supervision	Role part of the Central Bedfordshire Place Network	Role part of the Luton Place Network	Key External Resource	Externally funded role	(FTC) Fixed Term Contract
	Role part of the Population Health Intelligence Unit	Primary Care Training Hub Role	Workforce Development Academy Role	Role part of the Bedford Place Network	Role part of the Milton Keynes Place Network	Role part of the Shared Transformation Resource Network	Temporary Resource for Change

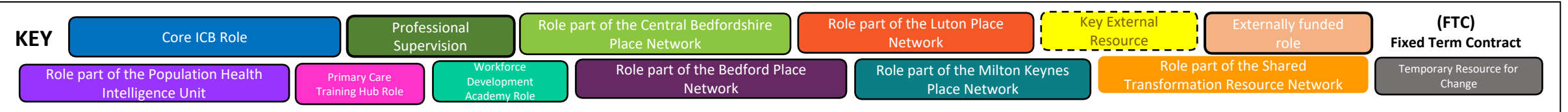
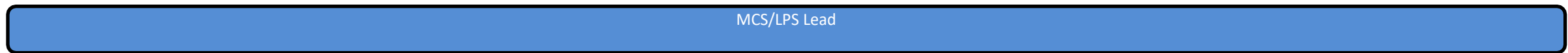
Nursing Directorate – Safeguarding & Vulnerabilities



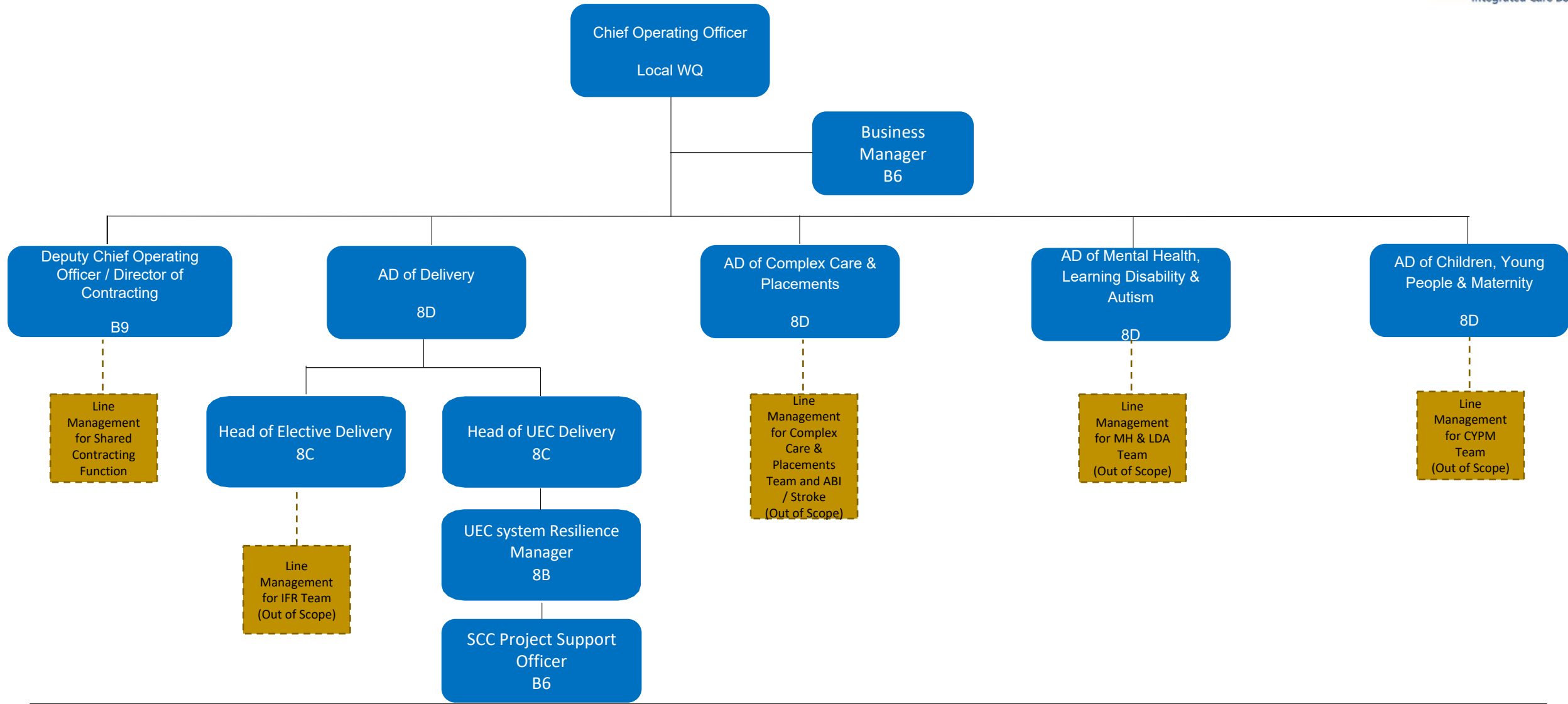
CBC and BBC

LUTON

MILTON KEYNES



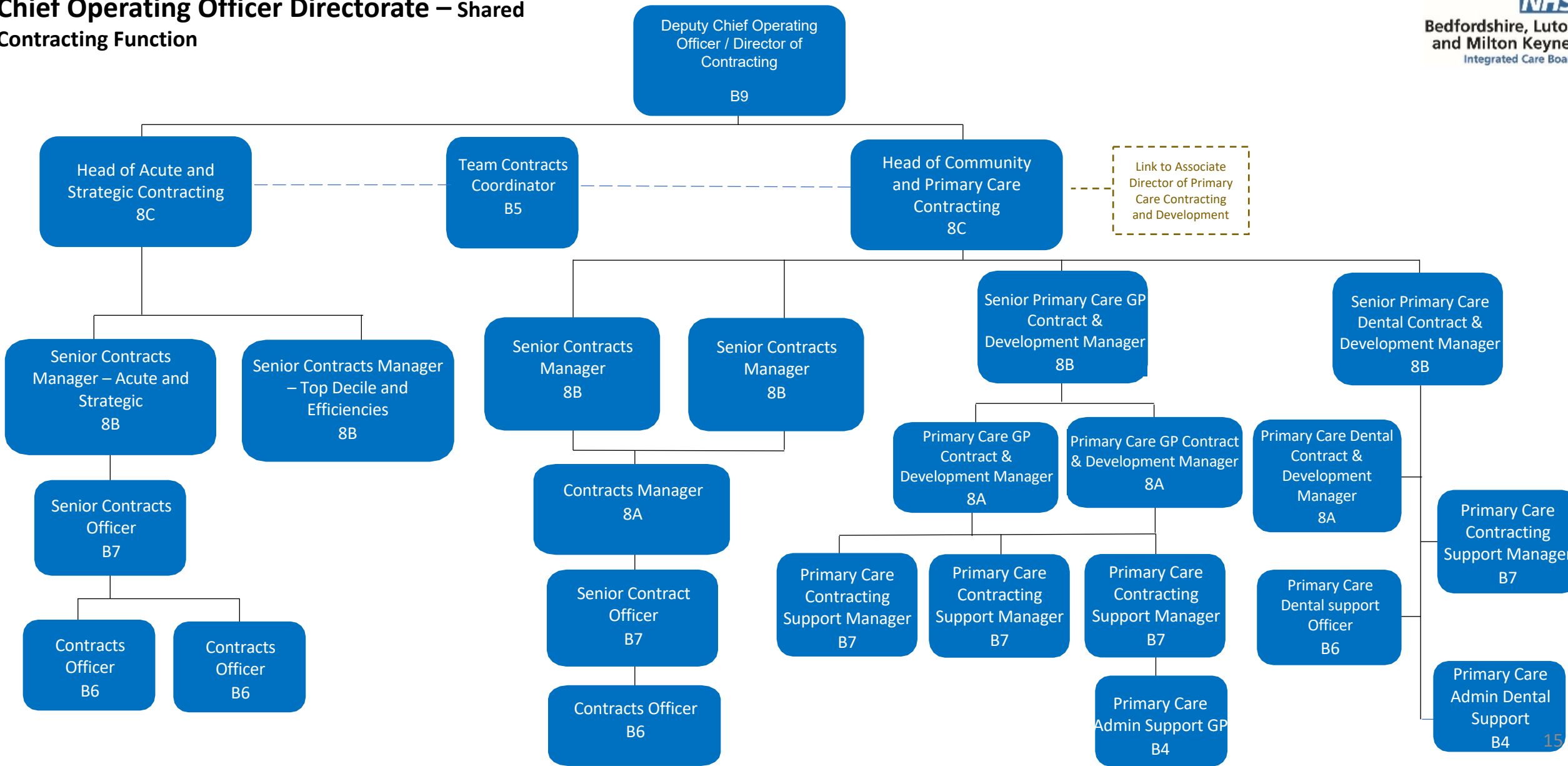
Chief Operating Officer Directorate – Senior Structure



KEY

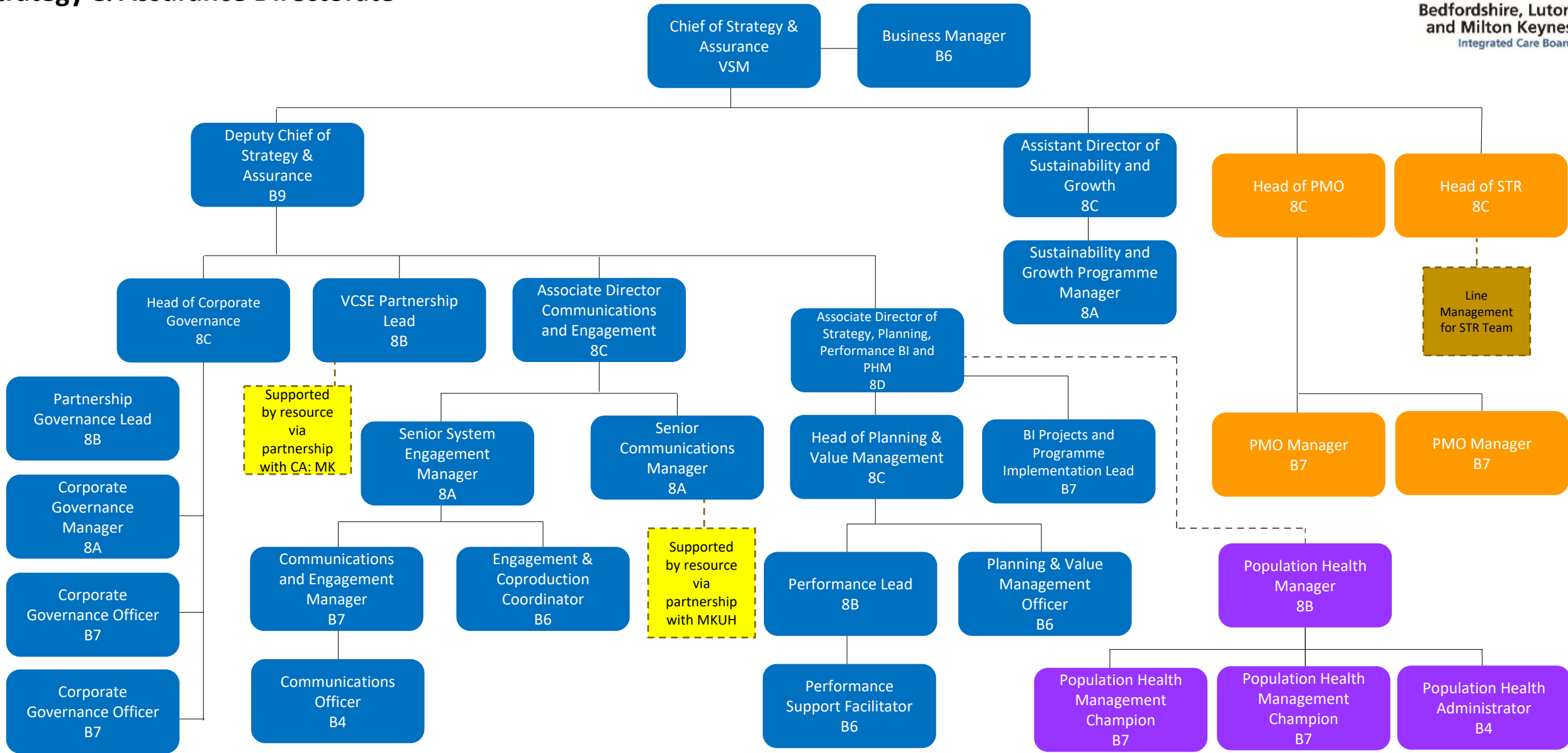
Core ICB Role	Professional Supervision	Role part of the Central Bedfordshire Place Network	Role part of the Luton Place Network	Key External Resource	Externally funded role	(FTC) Fixed Term Contract
Role part of the Population Health Intelligence Unit	Primary Care Training Hub Role	Workforce Development Academy Role	Role part of the Bedford Place Network	Role part of the Milton Keynes Place Network	Role part of the Shared Transformation Resource Network	Temporary Resource for Change

Chief Operating Officer Directorate – Shared Contracting Function



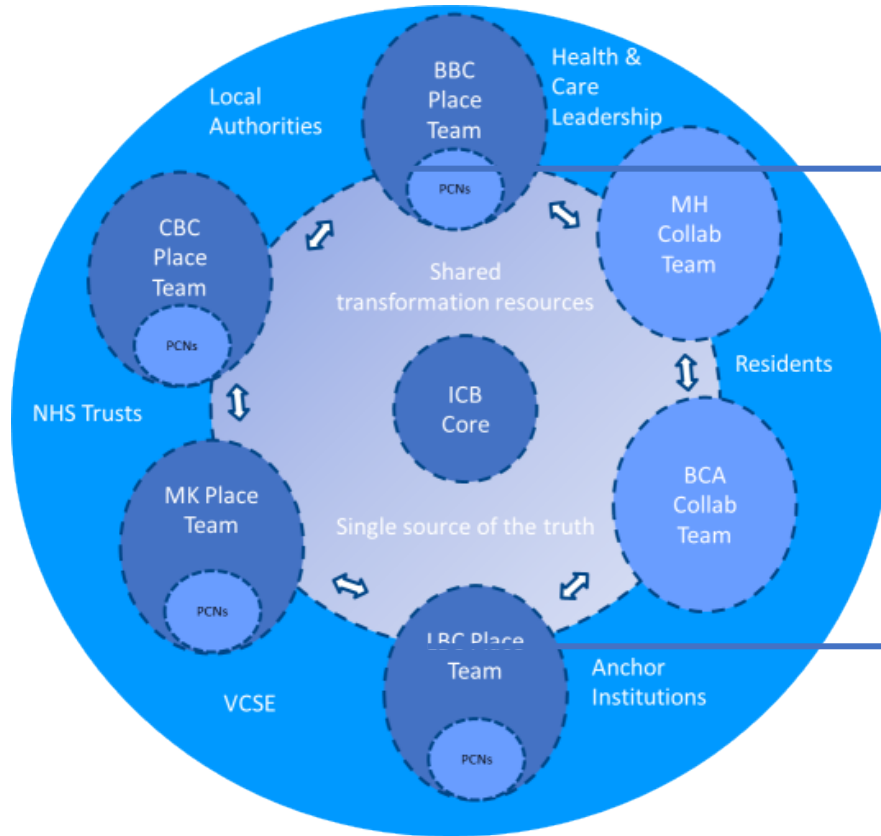
KEY

Core ICB Role	Professional Supervision	Role part of the Central Bedfordshire Place Network	Role part of the Luton Place Network	Key External Resource	Externally funded role	(FTC) Fixed Term Contract
Role part of the Population Health Intelligence Unit	Primary Care Training Hub Role	Workforce Development Academy Role	Role part of the Bedford Place Network	Role part of the Milton Keynes Place Network	Role part of the Shared Transformation Resource Network	Temporary Resource for Change



KEY

- Core ICB Role
- Professional Supervision
- Role part of the Central Bedfordshire Place Network
- Role part of the Luton Place Network
- Key External Resource
- Externally funded role
- (FTC) Fixed Term Contract
- Role part of the Population Health Intelligence Unit
- Primary Care Training Hub Role
- Workforce Development Academy Role
- Role part of the Bedford Place Network
- Role part of the Milton Keynes Place Network
- Role part of the Shared Transformation Resource Network
- Temporary Resource for Change

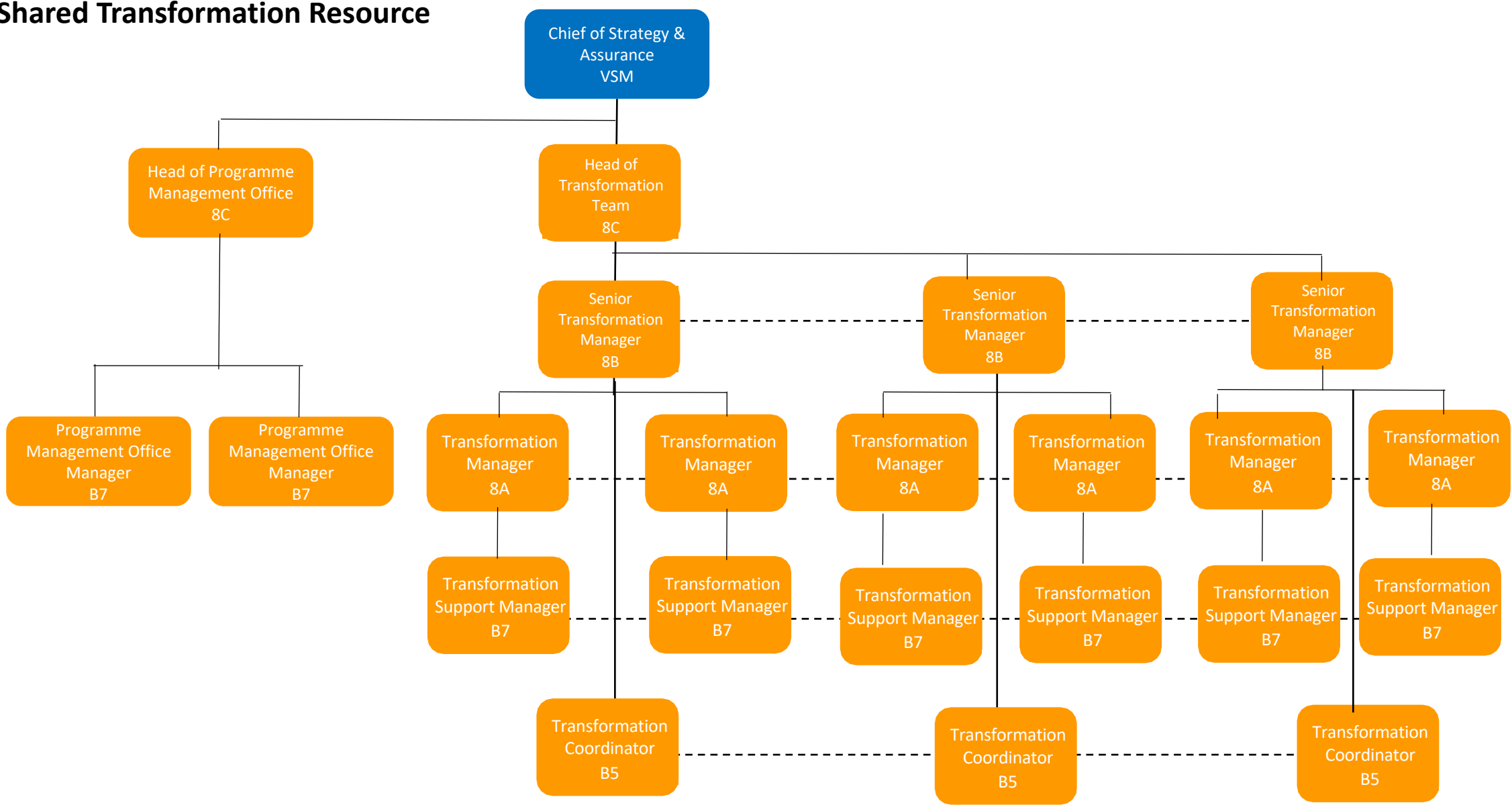


Shared Transformation Resource Teams and the Wider Shared Transformation Network

KEY

Core ICB Role	Professional Supervision	Role part of the Central Bedfordshire Place Network	Role part of the Luton Place Network	Key External Resource	Externally funded role	(FTC) Fixed Term Contract
Role part of the Population Health Intelligence Unit	Primary Care Training Hub Role	Workforce Development Academy Role	Role part of the Bedford Place Network	Role part of the Milton Keynes Place Network	Role part of the Shared Transformation Resource Network	Temporary Resource for Change

Shared Transformation Resource

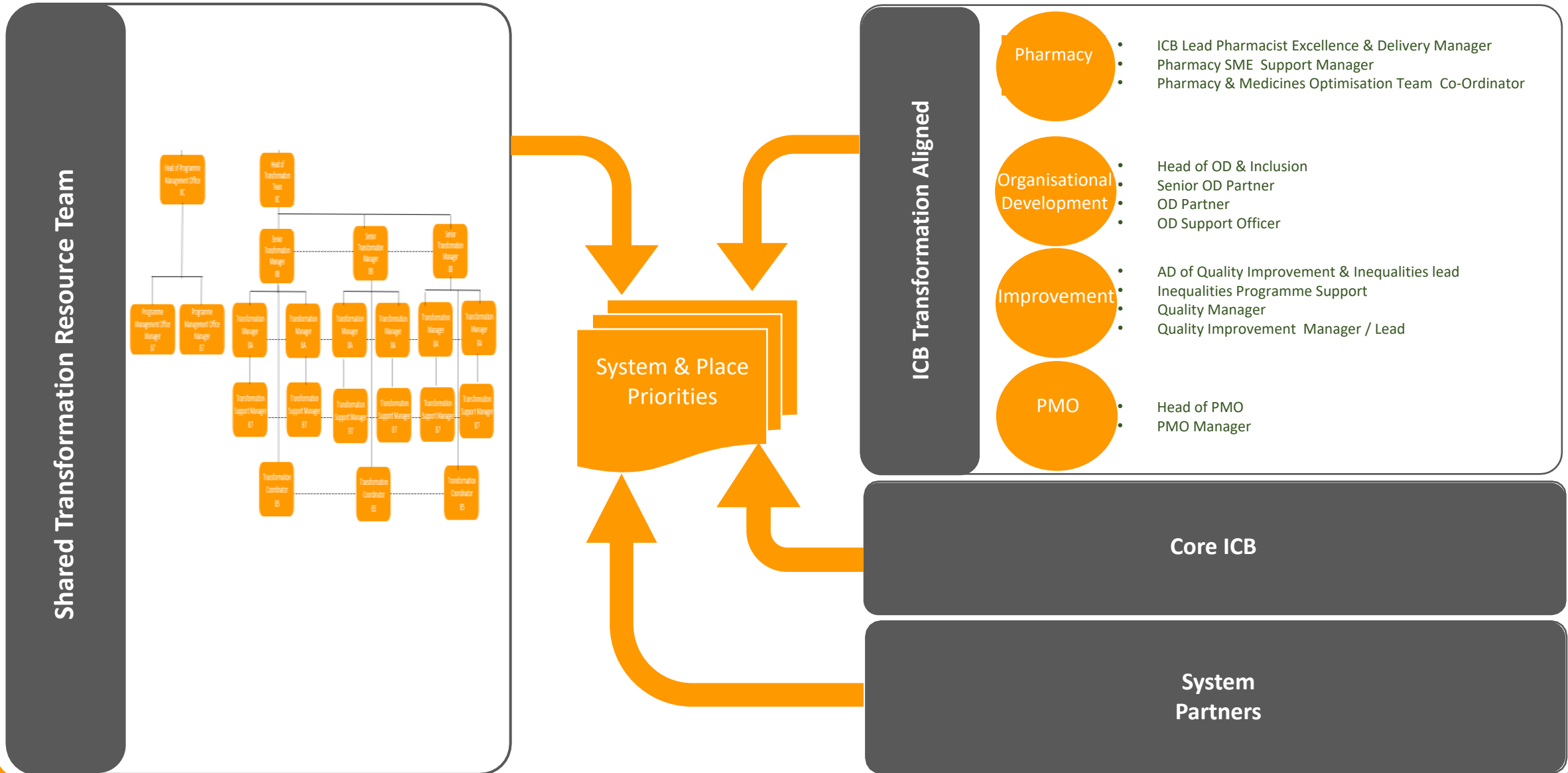


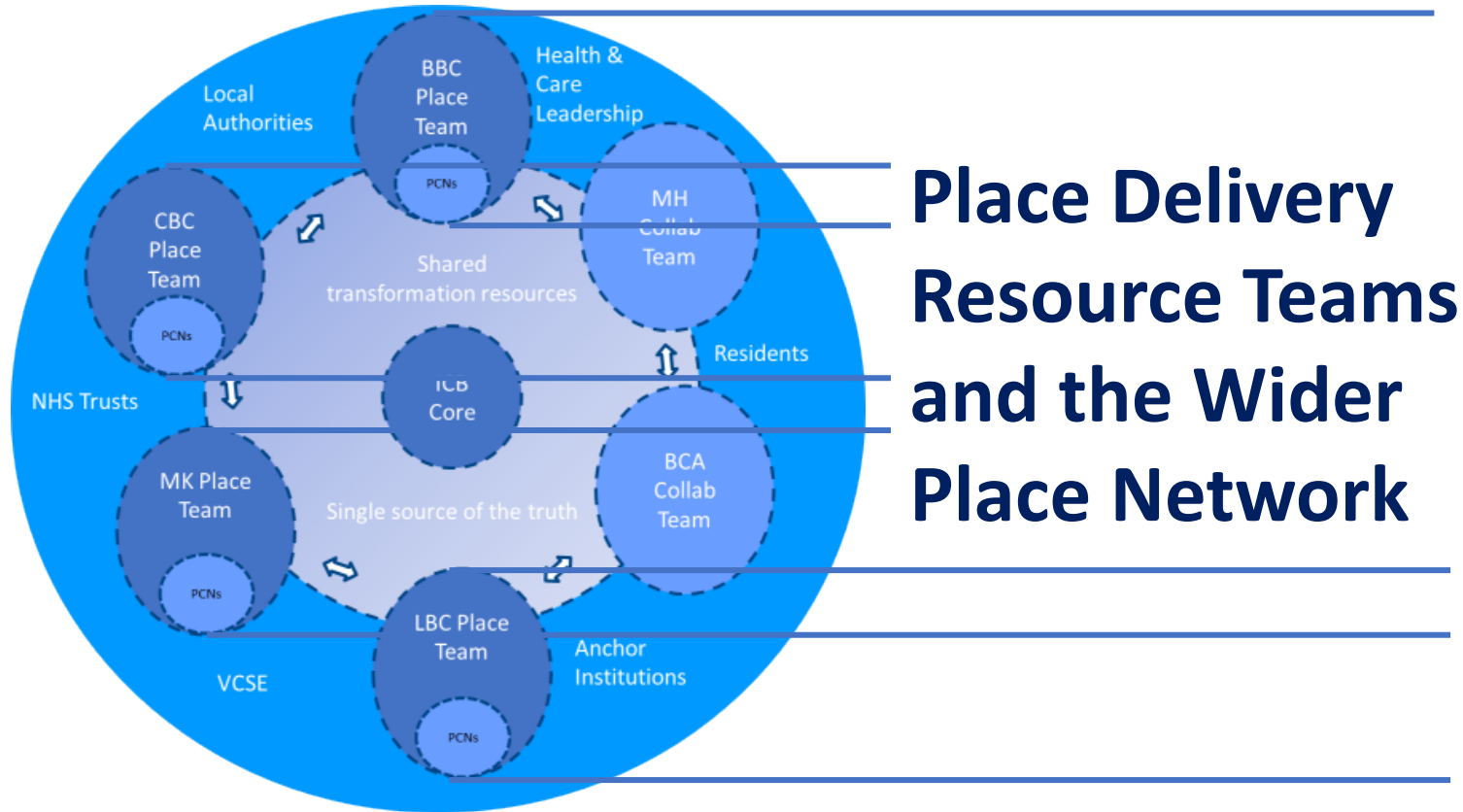
KEY

Core ICB Role	Professional Supervision	Role part of the Central Bedfordshire Place Network	Role part of the Luton Place Network	Key External Resource	Externally funded role	(FTC) Fixed Term Contract
Role part of the Population Health Intelligence Unit	Primary Care Training Hub Role	Workforce Development Academy Role	Role part of the Bedford Place Network	Role part of the Milton Keynes Place Network	Role part of the Shared Transformation Resource Network	Temporary Resource for Change

Shared Transformation Resource Team, supported by the Shared Transformation Network

The Shared Transformation Network, supporting delivery of system & place priorities

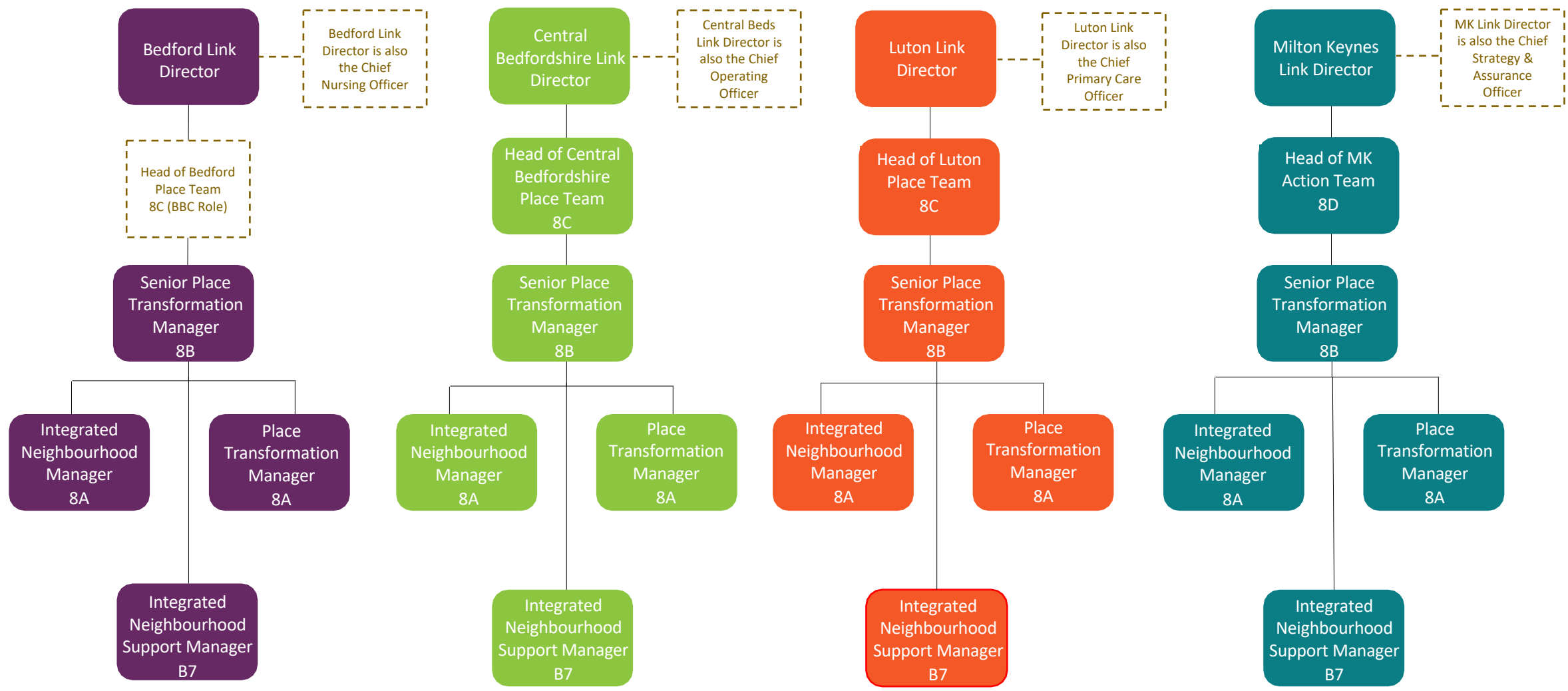




Place Delivery Resource Teams and the Wider Place Network

KEY	Core ICB Role	Professional Supervision	Role part of the Central Bedfordshire Place Network	Role part of the Luton Place Network	Key External Resource	Externally funded role	(FTC) Fixed Term Contract
	Role part of the Population Health Intelligence Unit	Primary Care Training Hub Role	Workforce Development Academy Role	Role part of the Bedford Place Network	Role part of the Milton Keynes Place Network	Role part of the Shared Transformation Resource Network	Temporary Resource for Change

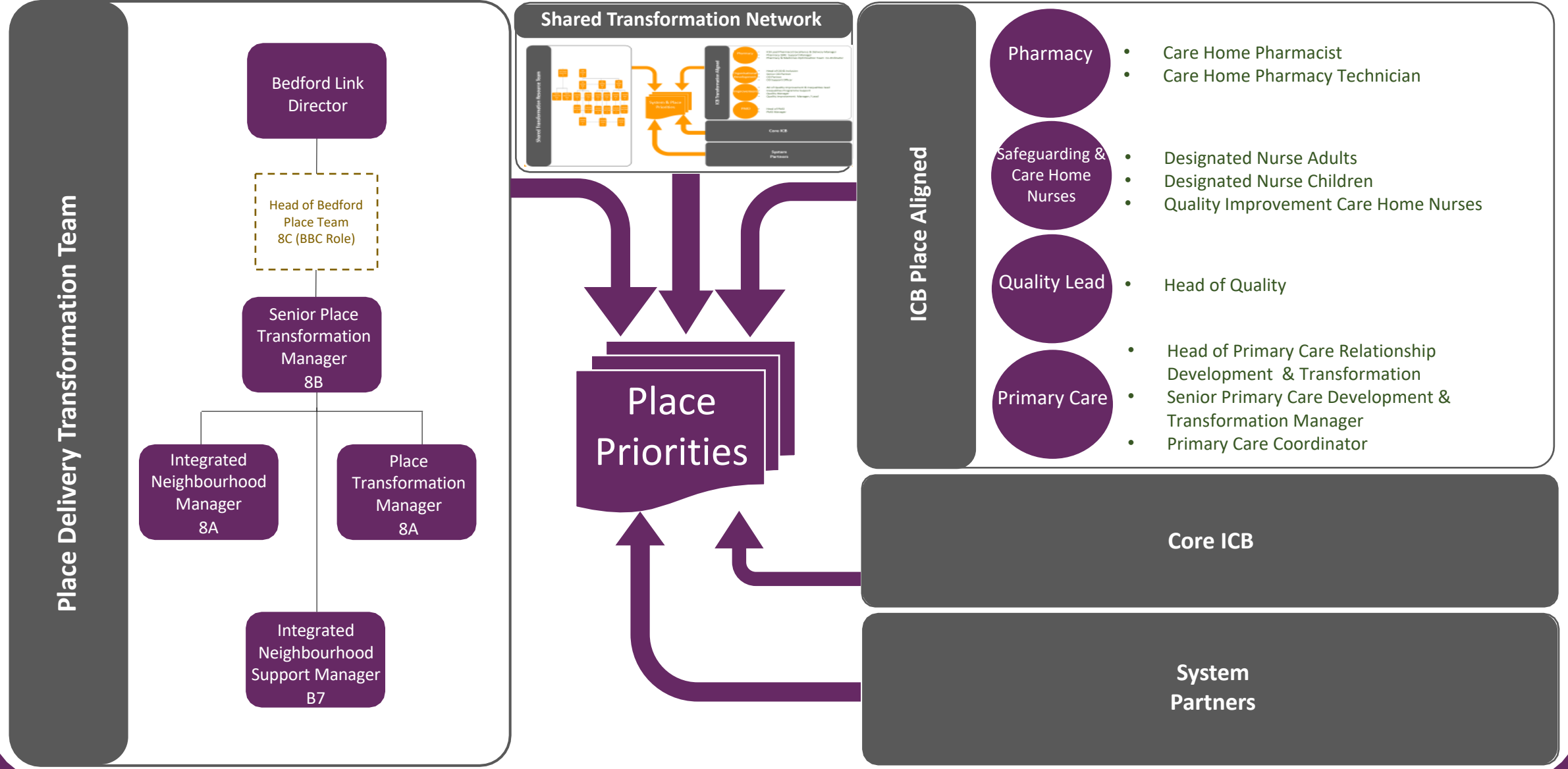
Place Delivery Resource – Bedford, Central Bedfordshire, Luton and Milton Keynes (MK)



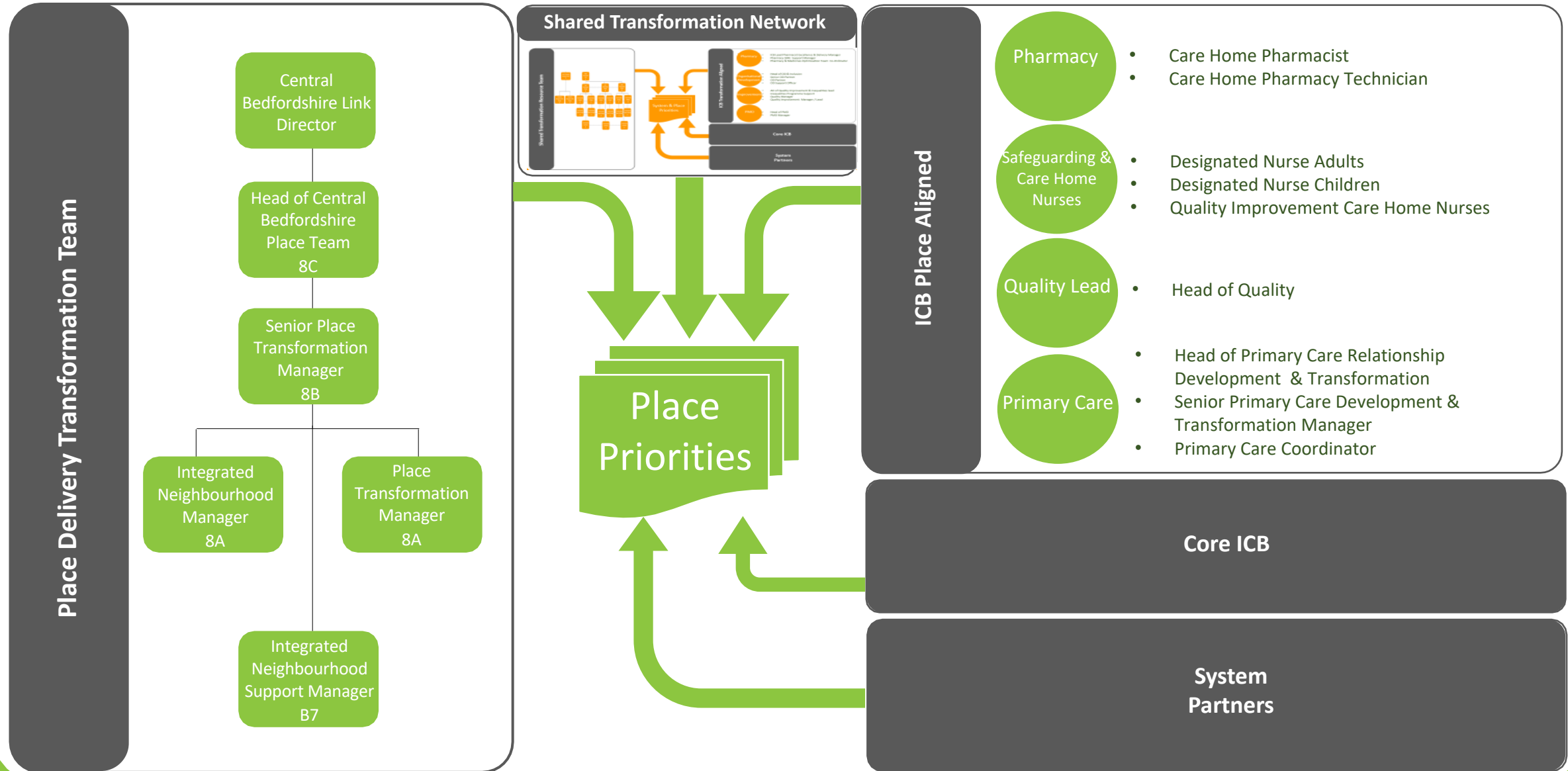
KEY

Core ICB Role	Professional Supervision	Role part of the Central Bedfordshire Place Network	Role part of the Luton Place Network	Key External Resource	Externally funded role	(FTC) Fixed Term Contract
Role part of the Population Health Intelligence Unit	Primary Care Training Hub Role	Workforce Development Academy Role	Role part of the Bedford Place Network	Role part of the Milton Keynes Place Network	Role part of the Shared Transformation Resource Network	Temporary Resource for Change

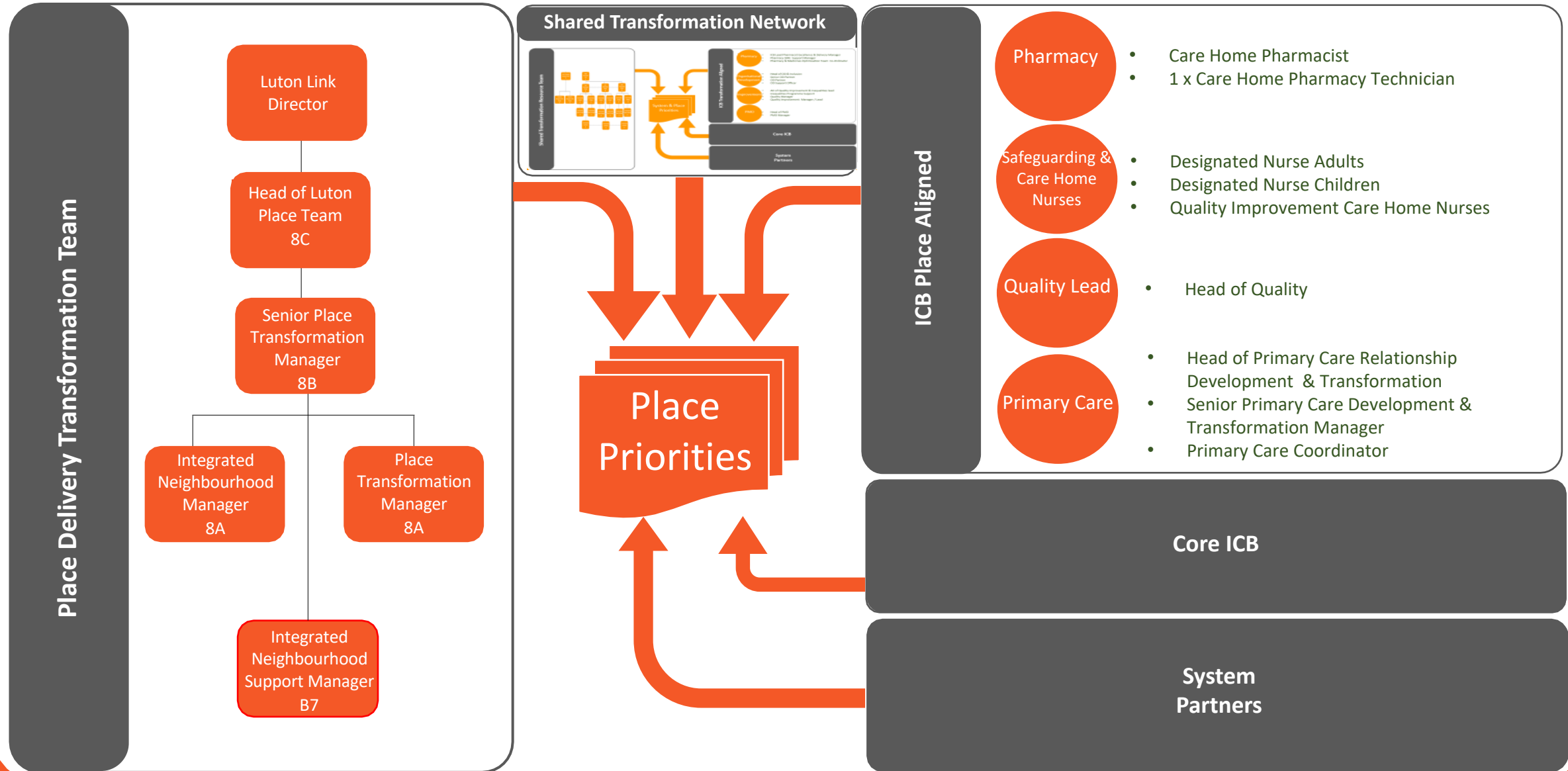
The Place Network, supporting delivery of place priorities



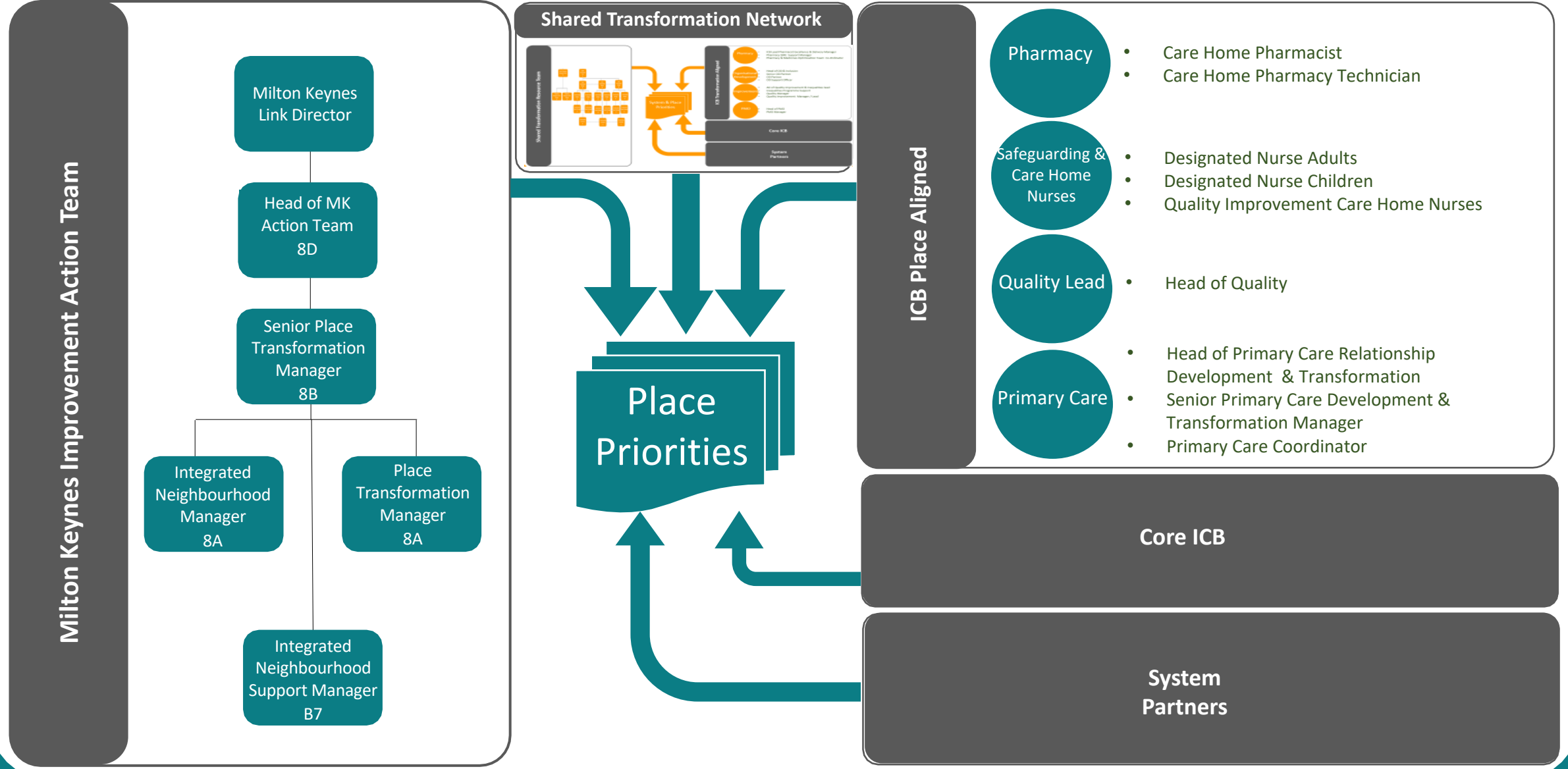
The Place Network, supporting delivery of place priorities



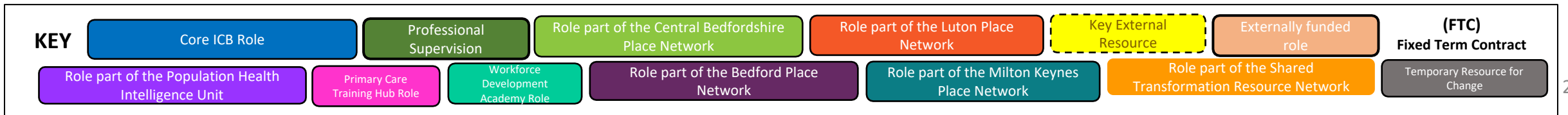
The Place Network, supporting delivery of place priorities



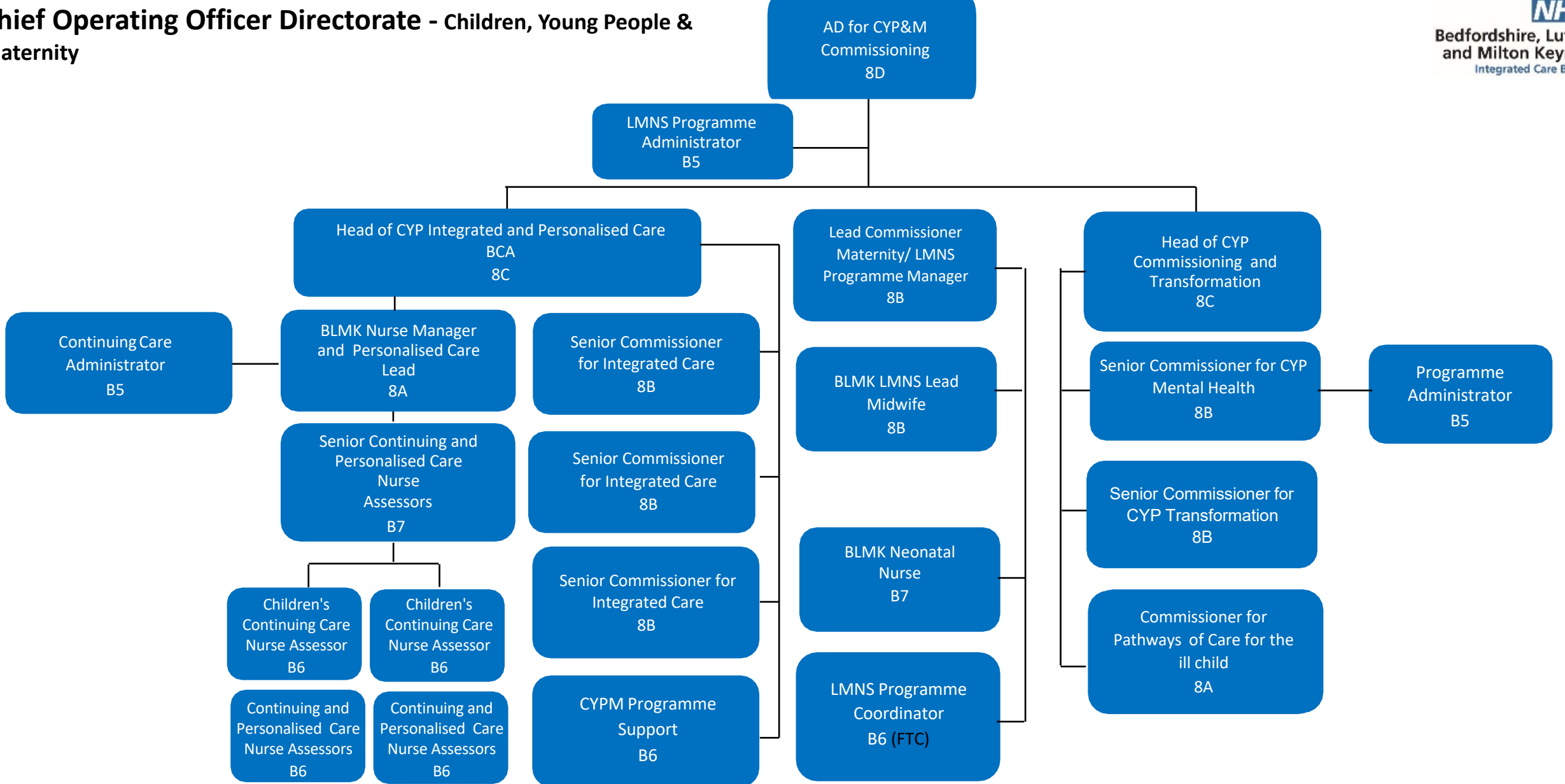
The Place Network, supporting delivery of place priorities



Out of Scope of Year 1 Consultation

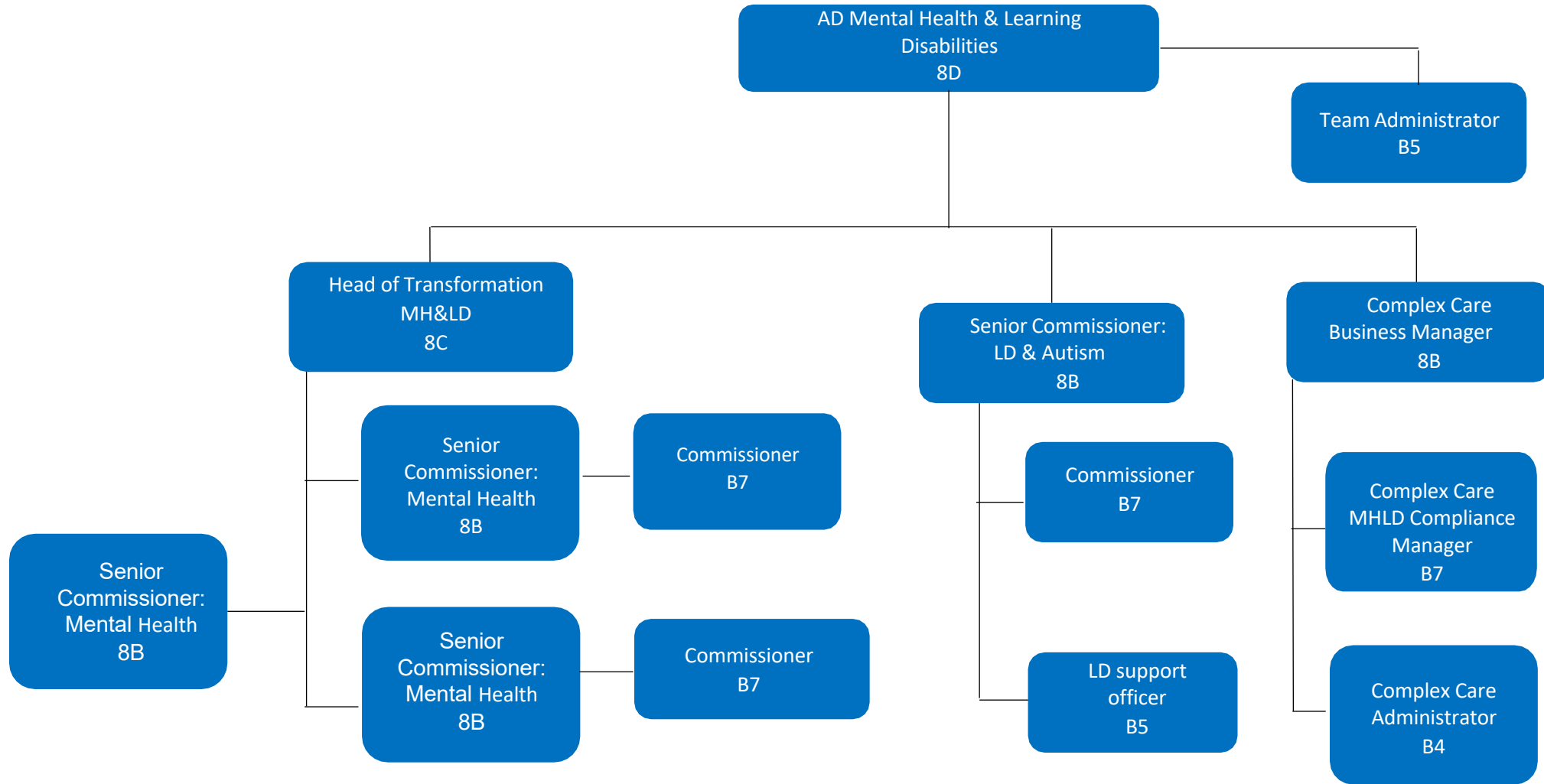


Chief Operating Officer Directorate - Children, Young People & Maternity



KEY

Core ICB Role	Professional Supervision	Role part of the Central Bedfordshire Place Network	Role part of the Luton Place Network	Key External Resource	Externally funded role	(FTC) Fixed Term Contract
Role part of the Population Health Intelligence Unit	Primary Care Training Hub Role	Workforce Development Academy Role	Role part of the Bedford Place Network	Role part of the Shared Transformation Resource Network	Temporary Resource for Change	
			Role part of the Milton Keynes Place Network			



KEY

Core ICB Role	Professional Supervision	Role part of the Central Bedfordshire Place Network	Role part of the Luton Place Network	Key External Resource	Externally funded role	(FTC) Fixed Term Contract
Role part of the Population Health Intelligence Unit	Primary Care Training Hub Role	Workforce Development Academy Role	Role part of the Bedford Place Network	Role part of the Milton Keynes Place Network	Role part of the Shared Transformation Resource Network	Temporary Resource for Change

